

Complete workstation for calibration
of automatic piston pipettes



www.radwag.com

calibration workstation for pipettes

RADWAG · 28 Bracka Street · 26-600 Radom · Phone: +48 48 3848800 · Fax: +48 48 3850010 · www.radwag.com · e-mail: export@radwag.com

In order to ensure measurement traceability, meet all the applicable requirements for surveillance over measuring equipment, and to facilitate the process of pipettes calibration, RADWAG recommends effective and ergonomic solution for calibrating automatic pipettes conducted by a user, **complete stand for calibration of pipettes!**

Purpose: calibration of automatic pipettes from 1 µg to 10 ml with fixed and adjustable volume.

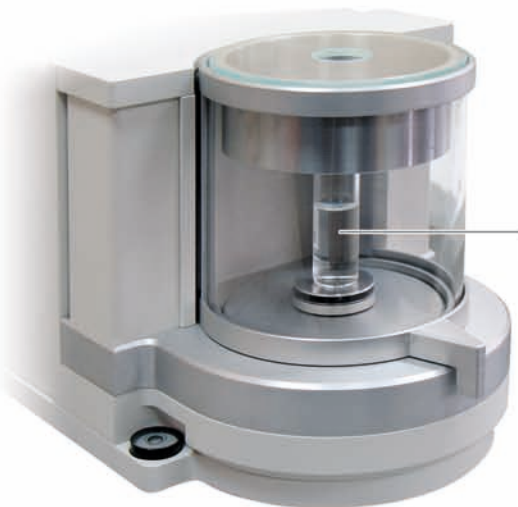


Unit contents:

- table for calibration
- analytical microbalance MYA 21/2Y/P
- anti-vibration table
- probe for temperature, humidity and pressure measurement
- probe for water temperature measurement
- sink for used water
- sucking pump
- armrests
- LCD monitor
- PC with pre-installed software PIPETTES RADWAG
- keyboard and mouse
- container for used water

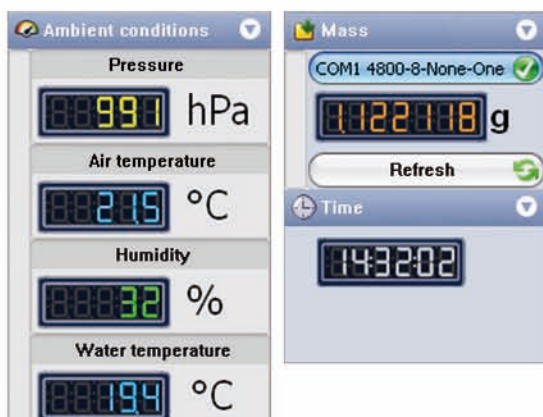
* The pipettes and other small accessories are not included in the unit content

Analytical Microbalance for calibration of pipettes



Pipette calibration KIT

Pipettes computer software – ambient conditions module



Calibration workstation enables a user to conduct pipettes calibration procedures. The workstation demonstrates high functionality and ergonomics of use. It is designed for being operated by right and left handed personnel. The calibration workstation for pipettes comprises three basic modules:

MEASURING MODULE:



1. Microbalance MYA 21/2Y/P:

An analytical balance designed especially for the purpose of pipettes calibration. The weighing chamber contains an evaporation ring minimizing the errors resulting from liquid evaporation process.

Basic parameters:

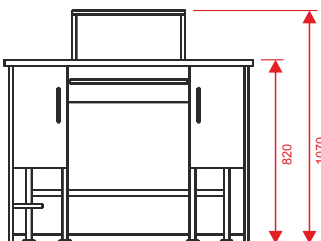
- Max: 21 g
- $d = 1 \mu\text{g}$
- repeatability: 2,1 μg
- linearity: $\pm 7 \mu\text{g}$

For more details and full technical data see instrument's product folder.



2. Weighing table:

The weighing table is designed with special emphasis on reliable, fast, comfortable and ergonomic operation. Workstation's external construction is independent on internally mounted anti-vibration table featuring a stone table top. The design eliminates possible vibrations and considerably shortens stabilization time of operated balance.

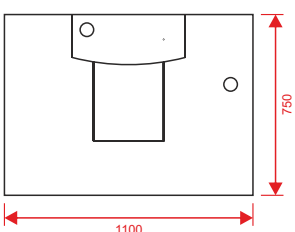


AMBIENT CONDITIONS MODULE:

1. Probes for measurement of water temperature, relative humidity and atmospheric pressure.

Parameters:

- air temperature: $d = 0,1^\circ\text{C}$
- relative humidity: $d = 1\%$
- atmospheric pressure: $d = 1 \text{ hPa}$



2. Probe for measurement of distilled water temperature.

Parameters:

- water temperature: $d = 0,1^\circ\text{C}$

COMPUTING MODULE:

1. PC computer

with LCD monitor, keyboard and mouse

2. PIPETTES computer software

conducting all the computation related to the procedure of pipettes calibration using gravimetric method in accordance with international standard ISO 8655-6.

The program allows to generate calibration reports, archiving measurement results and complex management of a pipette according to the standard ISO 10012.

For more details and full technical data see instrument's product folder.

