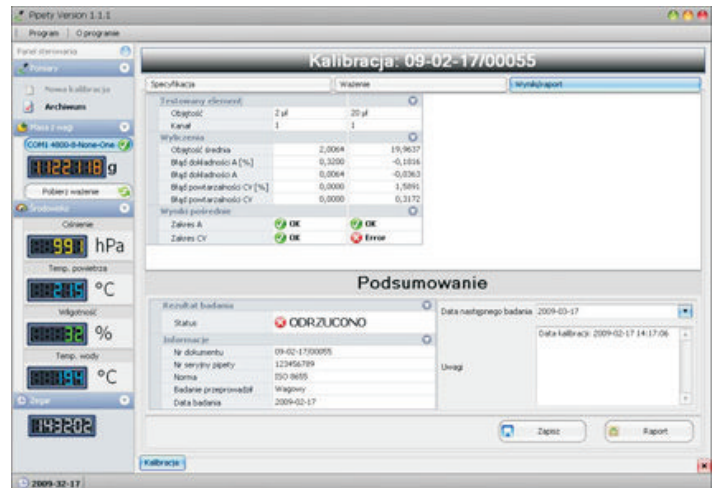




Product description:

Computer Software PIPETY (PIPETTES) is designed for the determination of volume measurement errors of pipettes (batchers) in accordance with the standard ISO 8655.



Designed for scales:

- XA/2X, MYA/2Y/P

Functions:

- calculating results on the basis of:
 - average volume of a pipette (channel)
 - systematic error e_s (accuracy error A)
 - random error CV (repeatability error)
- calibration of fixed volume pipettes (single channel) and adjustable volume pipettes (1, 8, 12 channels)
- automatic measuring procedures conditioned by the type of tested pipette
- technical data on pipettes are stored in the data base (option of defining user models)
- storing calibration results in MS Access data bases
- back-up of databases, including calibration results
- printouts of pipette calibration protocols
- exporting test reports to PDF, MS Word, Excel and other
- planning dates of subsequent calibrations
- filtering planned pipette calibration: current week or month
- cooperation with a balance connected through RS 232 port:
 - all RADWAG models – based on non-coded communication frame
 - connecting balances of different manufacturers
- option of manual input of weighing values

Minimal hardware requirements:

- Processor INTEL or AMD min 2000 MHz
- min 500 MB RAM
- SVGA video card
- Minimum of 50 GB HDD free space
- Windows XP/2000/Vista or a newer OS
- Microsoft R .NET Framework 2.0

* NOTE! RADWAG does not sell software "in box". Boxes presented on our Web-site are of virtual characteristic only, and they are not accessible with purchased software. The customer receives purchased software on a CD in special protective cover and the user manual as a brochure.