

ADDITIONAL ADAPTER FOR PIPETTES CALIBRATION

release date 13-04-2012



Additional adapter for pipettes calibration is designed for gravimetric calibration and/or checking of piston pipettes. The adapter can be installed in RADWAG balances series MYA 21, XA/2Y, XA/2X.

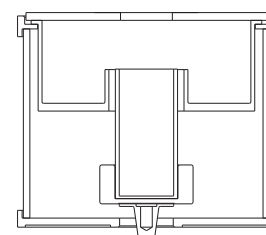
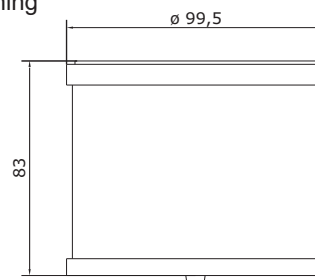
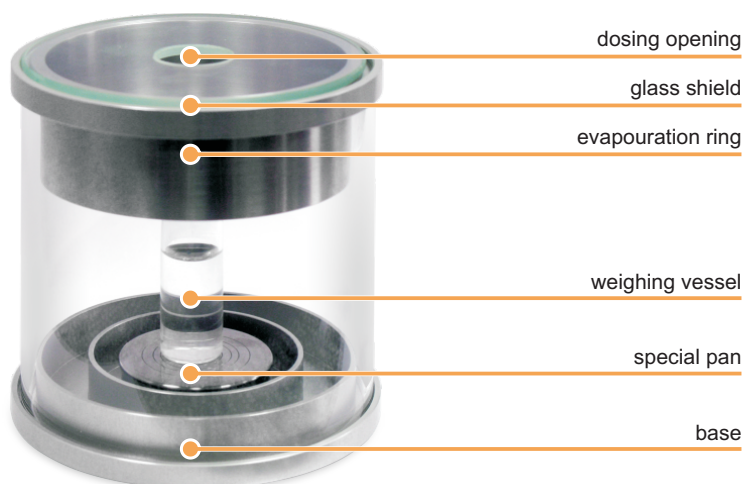
The adapter has been designed to minimize evaporation occurring in liquid handling procedures. An integral part of the adapter is an "evaporation ring" which provides high humidity rate inside the weighing chamber and the measuring vessel. Such design prevents from evaporation of liquids during weighing process.

The adapter for pipettes calibration is equipped with a specially designed weighing pan for central locating of the measuring vessel inside the weighing chamber. The whole adapter is enclosed in a glass shield equipped with a top opening for dosing liquids.

Non-centrally located opening in the top of the adapter simplifies insertion of a pipette with liquid. This solution also limits occurrence of air breeze.

The content of the adapter:

- base element;
- special weighing pan;
- measuring vessel;
- "evaporation curtain" vessel;
- glass cover with dosing opening



Adapter for pipettes calibration - example for MYA 21:

Calibration vessel	volume ~11 ml	dimensions ø ~15 mm x ~70 mm	
Range of calibrated pipettes	1 - 10 000 µl 10 - 1000 µl (no need to empty the vessel) 2000 µl (empty the vessel every 5 measurements) 5000 µl (empty the vessel every 2 measurements) 10 000 µl (empty the vessel on each measurement)		
Maximal capacity	21 g		
Balance readability	0,001 mg		
Balance metrological characteristics for calibration and/or checking of a pipette	weighing range	repeatability	standard uncertainty of measurement
	1 mg - 10 mg	0,002 mg	0,002 mg
	10 mg - 100 mg	0,003 mg	0,003 mg
	100 mg - 20 g	0,004 mg	0,010 mg
Recommended mass standard for balance control	pipette calibration ~100 mg U ≤ 0,002 mg	weighing mode ~20 g U ≤ 0,009 mg	

RADWAG

26-600 Radom • 28 Bracka Street • POLAND • Phone: +48 48 3848800 • Fax: +48 48 3850010 • www.radwag.com • e-mail: export@radwag.com